

C&L ENGINEERING GROUP LLC



COMPANY PROFILE



TABLE OF CONTENTS

1

About Us

2

Our Services

3

Machinery Overhaul

4

General Contractor

5

Our Customers

6

Energy Efficiency

7

Automation

8

Brands we work with

9

The Organization.

10

Local Inventory for VFDs

11

Contact information



About Us.

Introduction

C&L Engineering Group LLC is a company located in Puerto Rico, specializing in:

- General contractors
- Mechanical contractors
- Industrial automation
- Electrical distribution
- Process instrumentation

We provide tailored engineering solutions utilizing top-tier brands such as Siemens, Allen-Bradley, Keyence, and Vega.



Our Services

- We offer cutting-edge Automation and Control services, including PLC programming, variable frequency drives, retrofit projects, and overhauls using trusted brands like Siemens and Allen-Bradley.
- Our Process Instrumentation solutions incorporate precision sensors from Keyence and reliable level measurement devices from Vega, ensuring optimal process monitoring and control.
- In the field of Electrical Distribution, we supply and install Motor Control Centres (MCCs), switchboards, and control panels designed for safety, efficiency, and scalability. To promote sustainability, our Energy Efficiency services include wireless lighting controls that reduce energy consumption and operational costs.
- Additionally, our Measurement and Monitoring offerings feature Siemens power meters and comparable devices, providing accurate real-time data critical for system performance and energy management.

Machinery Overhaul



General Contractor



Warehouse Metal Structure Repair

Heavy Metal Mechanic Works



1 Year Warranty

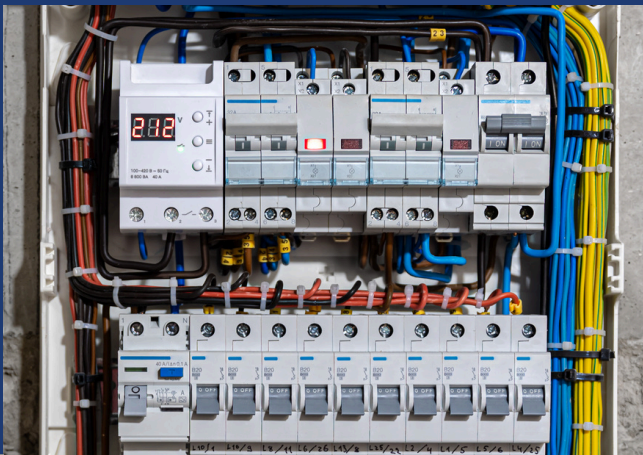


Heavy Pipe Welding Works



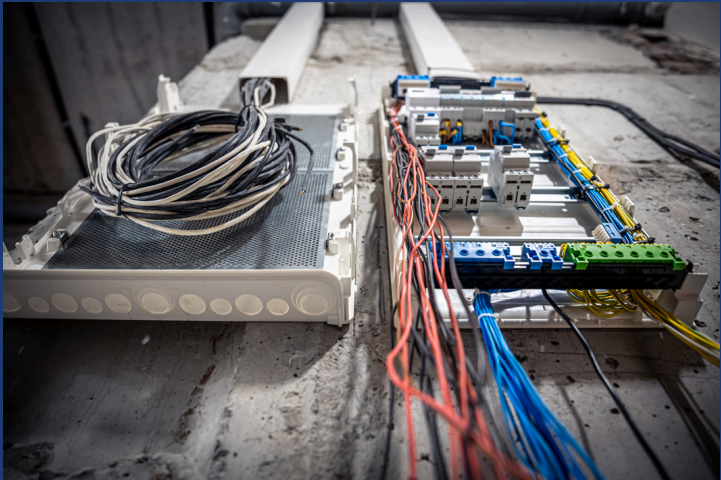
General Contractor

Electrical Installation



1 Year Warranty

Wiring & Conduits Installation



Industrial repair

Our Customers



Energy Efficiency

We follow a structured **Measurement and Verification (M&V)** approach that begins with a detailed energy audit and leads to the design, implementation, and performance analysis of efficiency measures. Using recognized standards such as IPMVP, we ensure that energy savings are accurately measured and reported from initial assessment to final project conclusion.



Energy Audit



Design



Implementation












Performance Analysis

SIEMENS

AcuityBrands



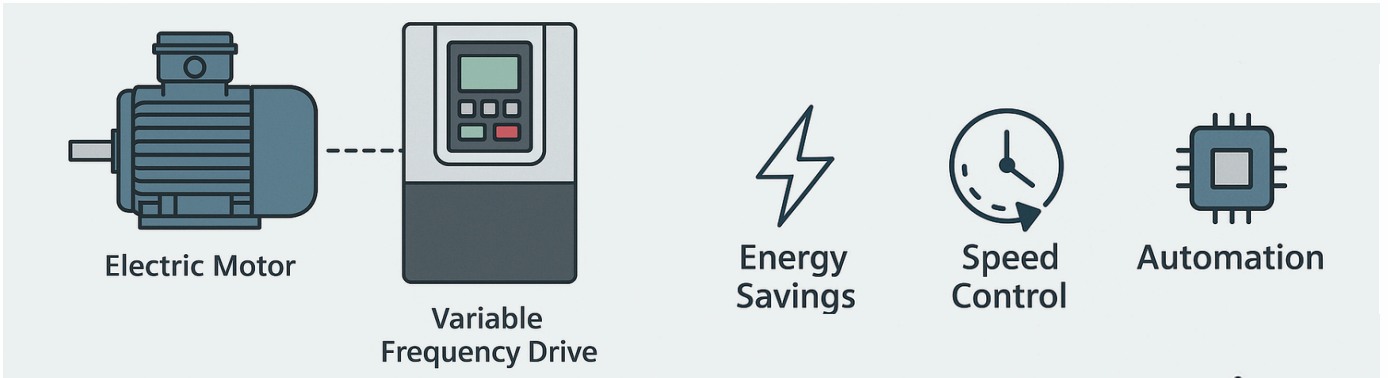
Energy Efficiency.

	Measuring device	Measuring device	Multifunctional recorder	Modular measuring device	Molded case circuit breaker	Air Circuit Breaker	Electronic circuit protection device	Arc fault detection device and miniature circuit breaker
	7KM PAC4220	7KM PAC5200	SICAM Q100 / Q200	AI Energy Meter	3VA2 ETU B-series	3WA	ECPD 5TY1 COM	AFDD/LS 5SV6 COM, LS 5SL6 COM
								
SENTRON portfolio for power monitoring	The professional solution for communication and monitoring	The specialist solution for measured value recording and power supply quality	The class A solution for power supply quality	The integrated energy measurement in automation	The specialist solution for protection and energy measurement	The incoming circuit breaker with communication	Innovation – the electronic circuit protection device	The communication-capable circuit protection devices
U, I, P, f, λ	x	x	x	x	x	x	x	x
Apparent active reactive energy cosφ	x x x x	x x x x	x x x x	x x x x	x x x x	x x x x	x' x' x' x	x x x –
Maximum input voltage L-L / L-N	690 V / 400 V	690 V / 400 V galvanically separated	690 V / 400 V galvanically separated	480 V / 277 V	690 V / 400 V (integrated)	1000 V / 577 V (integrated)	– 230 V	– 230 V
Current transformer connection direct measuring	x –	x –	x –	x –	Transformer (integrated)	Transformer (integrated)	– x	– x
DI / DO	2 / 2 (10 / 6 with expansion module)	0 / 2	Q100: 2 / 2 Q200: 6 / 6	via ET200 / via S7-1200	EFB300 (optional)	optional	1 / 1	–
Integrated communication	Modbus TCP	Modbus TCP	Modbus TCP, IEC 61850	PROFINET PROFIBUS	–	–	Wireless	Wireless
Communication via expansion module	Modbus RTU PROFINET PROFIBUS	–	Q100: 1 x Modbus TCP + IEC 61850 Q200: 2 x Modbus TCP + IEC 61850	Modbus TCP via CPU	Modbus TCP Modbus RTU PROFINET PROFIBUS	Modbus TCP PROFINET	Modbus TCP via SENTRON Powercenter 1000	Modbus TCP via SENTRON Powercenter 1000
I(N), I(Diff)	with expansion module	–	x	–	x	x	x	Optional RCM
Analog input	with expansion module	–	–	via ET200 / via S7-1200	–	–	–	–
Load profile record	x	x	x	in S7 CPU	x	x	–	–
Software interfaces	Webinterface, SIMATIC Energy Suite, SIMATIC Energy Manager PRO, SENTRON Powerconfig, SENTRON Powermanager	Webinterface, SENTRON Powerconfig, SENTRON Powermanager	Webinterface/ SICAM PQS / PQA, SENTRON Powermanager (real-time values)	SIMATIC/ SIMATIC Energy Suite	SIMATIC Energy Suite, SIMATIC Energy Manager PRO, SENTRON Powerconfig, SENTRON Powermanager	SIMATIC Energy Suite, SIMATIC Energy Manager PRO, SENTRON Powerconfig, SENTRON Powermanager	via SENTRON Powercenter 1000: SENTRON Powerconfig, SENTRON Powermanager	via SENTRON Powercenter 1000: SENTRON Powerconfig, SENTRON Powermanager
THD Flicker, fault recorder, EN 50160 reporting	x –	x x	x x Transient recording up to 1 μs (Q200)	x x	x –	x –	– –	– –
Harmonics	1 ... 64.	2 ... 40.	Q100: 2–50 kHz Q200: 2–63 kHz, 2–9 kHz, 9–150 kHz Harmonic Direction	2 ... 40.	1 ... 19.	2 ... 31.	–	–
Accuracy class active energy reactive energy	0.2 2	0.5 2	0.2 S 2	0.5 1	2 S 2 (incl. transformer)	2 S 2 (incl. transformer)	Class 1 st	Class 1 st
Standard measuring devices	IEC 62053-22, IEC 62053-23, IEC 61557-12, LIL 61010-1	IEC 62053-22, IEC 62053-23, IEC 61557-12, IEC 61000-4-30	IEC 62586-1, IEC 61000-4-30, IEC 61000-4-7, IEC 61000-4-15	IEC 61557-12	IEC 61557-12	IEC 61557-12	IEC 61557-12, IEC 62053-22, IEC 62053-23 st	IEC 61557-12, IEC 62053-22, IEC 62053-23 st
MID certified	–	–	–	–	–	–	–	–
PMD class according to IEC60364-8-1	PMD 3	PMD 3	PMD 3	PMD 3	PMD 3	PMD 1-3	PMD 2	PMD 2
Order information	siemens.com/product?7KM42	siemens.com/product?7KM5	siemens.com/product?7KG9	siemens.com/product?76E57	siemens.com/product?3VA2	siemens.com/product?3WA	www.siemens.com/product?5TY1	siemens.com/product?Messfunktion%2C%20kommunikation

Automation

We provide intelligent automation solutions through advanced motor control systems and variable frequency drives (VFDs). Our approach ensures energy efficiency, precise speed regulation, and smooth process integration across industrial and commercial applications.

From basic motor starters to fully networked drive systems, we deliver scalable, reliable automation.



Brands we work with

At C&L ENGINEERING GROUP LLC, we proudly work with industry-leading brands that guarantee precision, innovation, and reliability in every project. Our technical solutions are powered by trusted names such as Siemens, Allen-Bradley, Keyence, and Vega, among others.

These global manufacturers provide state-of-the-art automation, control, and measurement technologies—ensuring top-tier performance, compliance, and long-term efficiency for our clients in both the public and private sectors.



The Organization.



LUIS COLL

CEO

Mechanical Engineer with over 10 years of industry experience, combining technical precision with strategic vision to drive innovation.



JAVIERA MONTECINOS

HR MANAGER

Human Resources Manager with a degree in Organizational Psychology, expert in talent development and building strong workplace cultures.



MANUEL PREFECTO

Internal Sales

Professional responsible for evaluating, managing, and mitigating the environmental impacts of projects, ensuring compliance with current environmental regulations and promoting sustainability



ALEJANDRO ALFONSO

CFO

CFO with a degree in Economics, managing all financial operations. Focused on budgeting, reporting, and aligning finances with business goals.

Local Inventory for VFDs

SINAMICS S210



Highlights

- Easy installation with One Cable Connection (OCC) and easy commissioning with One Button Tuning
- Basic and Extended Safety Integrated functionality via PROFIsafe
- SIMOTICS S-1FK2, S-1FT2 and S-1FS-2 motors for increased performance

Applications



Processing Positioning Moving

SINAMICS G120D



Highlights

- Integrated safety functions and positioning functionality
- Simple commissioning using prompted parameterizing software
- High degree of protection

Applications



Moving Positioning

SINAMICS G120



Highlights

- High degree of flexibility and combinability
- Higher-level, standard safety concept
- Wide range of power ratings

Applications



Pumping/
Ventilating/
Compressing

Moving



Processing Positioning

Modular design



SINAMICS G115D



Highlights

- User friendly, modular solution with a new design for easy wiring, commissioning and service incl. dedicated features for conveyor technology
- Out-of-the-box concept for easy handling, fast set up and an extremely simple to operate design for applications with horizontal motion

Applications



Moving

C&L ENGINEERING GROUP LLC

CM12 DR JG PADILLA,
TOA BAJA, PR 00949

 +17876923379

 luis.coll@clegllc.com

